

# Model

# G6-42P

## TELEHANDLER

### REAR PIVOT STEER



### Performance

#### Rated Capacity

At 24 in. (610 mm) load center,  
6,600 lb (3,000 kg)

#### Maximum Lift Height

42 ft (12.8 m)

#### Frame Leveling

8 degrees

#### Lift Speed (boom retracted)

Up: 11.8 sec  
Down 8.9 sec

#### Boom Speed

Extend: 16.5 sec  
Retract: 13.4 sec

#### Travel Speeds Forward

2WD: 0–16 mph (25.7 kmph)  
4WD: 0–6 mph (9.7 kmph)

#### Drawbar Pull (loaded)

16,300 lb (7,390 kg)

#### Operating Weight

With 48 in. Carriage and Forks,  
20,400 lb (9,253 kg)

### Standard Specifications

#### Engine

Make and Model	John Deere 4045T Turbocharged
Fuel	Diesel
Cycles	4
No. of Cylinders	4
Displacement	276 cu in (4.5 L)
Rated Speed	2,500 rpm
Max. Gross BHP	99 hp (74 kW)
Fuel Tank	46 gal (174 L)

#### Engine Filters

Two-stage dry air cleaner—centrifugal pre-cleaner with continuous dust ejector plus cleanable and replaceable dry filter element.

Visual service indicator.

Replaceable fuel filter/water separator element.

Full-flow replaceable spin-on engine oil filter.

#### Electrical System

Voltage: 12V

Alternator: 63 amp

Battery: 810 Cold Cranking amps at 0°F

#### Hydrostatic Drive

6,300 PSI (43,437 kPa) closed loop with piston pump and motors.

8 micron suction filter for charge pump.

Self-contained, swashplate design, variable displacement, over center, piston pump. Integral reservoir with implement hydraulics.

Neutral start switch. (Park brake must also be engaged to start.)

2WD and 4WD inching.

Electro/hydraulic traction lock valve for superior tractive effort.

#### Axles

Planetary hubs with piston motors on rear axle.

Piston motor-driven planetary front axle with high-bias limited slip differential.

#### Brakes

Hydraulic wet disc brake on each front wheel.

Hydraulic dynamic braking on front axle and both rear wheels.

#### Parking Brakes

Wet disc spring-applied electro/hydraulic release.

Light on dashboard indicates when brakes are on.

#### Tires

Standard: 13:00 x 24 — 12PR, G2 type

#### Cab

ROPS/FOPS structure operator cab.

Wrap-around dashboard with easy-to-read gauges.

#### Steering

Hydraulic power steering with manual backup.

Rear wheel steering, 90° pivot around either front tire.

Outside turning radius is less than chassis length.

#### Instruments

Volt meter, hourmeter, engine oil pressure, water temperature, fuel gauge.

All gauges protected by clear acrylic cover.

#### Controls

Grouped for operator comfort and convenience.

Boom lift and crowd on single joystick.

Right-hand tilt and sway lever.

Foot throttle.

Floor mounted traction lock switch

#### Hydraulic System-Implement

Dual-section gear pump.

Lift, telescope, tilt and sway cylinders have load checks to prevent dropping of load in the event of hose or other hydraulic failure.

#### Auxiliary Hydraulics

### Accessories & Options

#### Enclosed Cab

#### Left Hand Tilt/Sway

#### Joystick Mounted Tilt

#### Auxiliary Electrics

#### Instant Hook

#### Cold Weather Package

#### Work Lights

#### Road Lights

#### Rotating Beacon

#### Pintle Hook

#### Tires:

- 14 x 24 — 12 PR
- Foam-filled
- Rock
- Solid

### Attachments

#### Standard Carriage

50 in. (1.3 m) or 60 in. (1.5 m) or 72 in. (1.8 m)

#### Side-Tilt Carriage

50 in. (1.3 m) or 60 in. (1.5 m) or 72 in. (1.8 m)

#### Swing Carriage

72 in. (1.8 m); 90 degrees

#### Sheet Material Adapter

#### Tower

8 ft (2.4 m); 50 in. (1.3 m) Standard or Side-tilt Carriage

#### Pallet Forks

2.36 x 4 x 48 in. (60 mm x 102 mm x 1.2 m)

2.36 x 5 x 48 in. (60 mm x 127 mm x 1.2 m)

2.00 x 6 x 72 in. (51 mm x 152 mm x 1.8 m)

#### Lumber Forks

1.75 x 7 x 60 in. (44 mm x 178 mm x 1.5 m)

2.36 x 6 x 60 in. (60 mm x 152 mm x 1.5 m)

#### Cubing Forks

2 x 2 x 48 in. (51 mm x 51 mm x 1.2 m)

#### Material Bucket

72 in. (1.8 m), 1.0 cu yd (0.76 m<sup>3</sup>)

96 in. (2.4 m), 1.5 cu yd (1.15 m<sup>3</sup>)

102 in. (2.6 m), 2.0 cu yd (1.53 m<sup>3</sup>)

#### Grapple Bucket

96 in. (2.4 m), 1.75 cu yd (1.34 m<sup>3</sup>)

#### Truss Boom

12 ft (3.7 m), 2,000 lb (907 kg) capacity

15 ft (4.6 m), 2,000 lb (907 kg) capacity

12 ft (3.7 m) with winch, 2,000 lb (907 kg) capacity

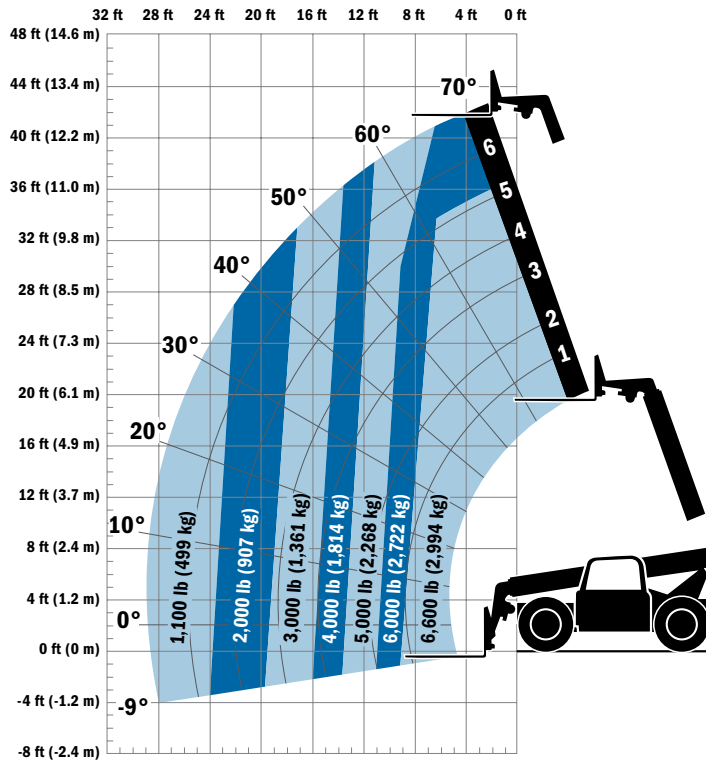
#### Fork Mounted Work Platform

8 ft (2.4 m), 1,000 lb (455 kg) capacity

#### Lifting Hook



# Model G6-42P TELEHANDLER REAR PIVOT STEER



## Dimensions

Length (less forks)	218 in. (5.53 m)
Width	96 in. (2.43 m)
Height	94 in. (2.38 m)
Wheelbase	130 in. (3.30 m)
Ground Clearance	17.75 in. (450 mm)
Outside Turning Radius	171 in. (4.34 m)
Max. Reach from Front Tires to 24 in. (609 mm) Load Center	29 ft (8.84 m)

## IMPORTANT

Rated lift capacities shown are with machine equipped with carriage and pallet forks. The machine must be level on a firm surface with undamaged, properly inflated tires. Machine specifications and stability are based on rated lift capacities at specific boom angles and boom lengths. (If specifications are critical, the proposed application should be discussed with your dealer.)

DO NOT exceed rated lift capacity loads, as unstable and dangerous machine conditions will result.

DO NOT tip the machine forward to determine the allowable load.

Use only JLG approved attachments with proper material handler model/attachment load capacity charts displayed in the operator's cab. OSHA requires all rough terrain forklift operators be trained according to OSHA 29 CFR 1910.178 (1).



### JLG Industries, Inc.

1 JLG Drive  
McConnellsburg, PA 17233-9533  
Telephone 717-485-5161  
Toll-free in US 877-JLG-LIFT  
Fax 717-485-6417  
[www.jlg.com](http://www.jlg.com)

An Oshkosh Corporation Company

Due to continuous product improvements, JLG Industries reserves the right to make specification and/or equipment changes without prior notification. This machine meets or exceeds ANSI/ITSDF B56.6-2005 as originally manufactured for intended applications.

Form No.: SS-G642P-0104-15M  
Part No.: 3132229  
Printed in USA