

## Model 6042 TELEHANDLER



### Performance

<b>Rated Capacity</b>	6,000 lb (2,722 kg)
<b>Maximum Lift Height</b>	41 ft 11 in. (12.7 m)
<b>Frame Leveling</b>	10 degrees
<b>Lift Speed (boom retracted)</b>	Up: 17.5 sec Down: 11 sec
<b>Boom Speed</b>	Extend: 19 sec Retract: 19 sec
<b>Travel Speed Forward</b>	20 mph (32 kmph)
<b>Drawbar Pull</b>	23,580 lb (10,695 kg)
<b>Operating Weight</b>	With 48 in. Carriage and Forks 24,280 lb (11,013 kg)

### Standard Specifications

<b>Engine</b>	
Make and Model	Cummins QSB3.3
Fuel	Diesel
Cycles	4
No. of Cylinders	4
Displacement	239 cu in. (3.9 L)
Torque Rating	305 lb ft (414 Nm) @ 1,500 rpm
Rated Speed	2,500 rpm
Max. Gross BHP	99 hp (74 kW)
Fuel Tank	35 gal (132 L)
Air Intake and Engine Block Heater	
<b>Engine Filters</b>	
Two-stage dry air cleaner — centrifugal pre-cleaner with continuous dust ejector and replaceable dry filter element.	
Replaceable spin-on fuel filter.	
Full-flow replaceable spin-on engine oil filter.	
<b>Electrical System</b>	
Voltage: 12V	
Alternator: 95 amp	
Battery: 850 cold cranking amps at 0°F	

### Transmission

Modulated powershift.  
4-speed forward and 3-speed reverse.

### Axles

Full-time planetary 4-wheel drive.  
Oscillating rear axle with Stabil-Trak system.

### Service Brakes

Hydraulically actuated inboard wet disc brakes.

### Parking Brakes

Emergency brake with transmission declutch feature.

### Tires

Standard: Air-filled 13.00 x 24 — 12 ply

### Cab

Certified ROPS/FOPS structure.  
Adjustable suspension seat with retractable seat belt.  
Rear view mirrors.  
Lockable covers.

### Steering 4-Wheel

Power steering.  
Operator selectable 4-wheel circle, 4-wheel crab, 2-wheel front.

### Instruments

Instrument cluster with gauges and warning lights.

### Controls

Dual joystick controls.  
Proportional frame tilt, fork tilt and auxiliary hydraulics.

### Hydraulic System-Implement

Piston pump.  
60 gal (225 L) system capacity.  
Variable flow, load sensitive hydraulic system.  
Load holding valves on frame level, stabilizer, attachment tilt, extend and lift cylinders.

### Auxiliary Hydraulics

Used for all attachments equipped with cylinders or other hydraulic components. Consists of valves, controls, and hydraulic lines.

### Accessories & Options

#### Enclosed Cab

#### Work Lights

#### Road Lights

#### Rotating Beacon

#### Fenders

#### Tires:

Foam Filled  
Rock  
Solid  
15.5 x 25

### Attachments

#### Standard Carriage

50 in. (1.3 m) or 60 in. (1.5 m) or 72 in. (1.8 m)

#### Side-Tilt Carriage

50 in. (1.3 m) or 60 in. (1.5 m) or 72 in. (1.8 m)

#### Swing Carriage

72 in. (1.8 m); 90 degrees

#### Sheet Material Adapter

#### Tower

8 ft (2.4 m); 50 in. (1.3 m) Standard Carriage

#### Pallet Forks

2.36 x 4 x 48 in. (60 mm x 102 mm x 1.2 m)  
2.36 x 5 x 48 in. (60 mm x 127 mm x 1.2 m)  
2.00 x 6 x 72 in. (51 mm x 152 mm x 1.8 m)

#### Lumber Forks

1.75 x 7 x 60 in. (44 mm x 178 mm x 1.5 m)  
2.36 x 6 x 60 in. (60 mm x 152 mm x 1.5 m)

#### Cubing Forks

2 x 2 x 48 in. (51 mm x 51 mm x 1.2 m)

#### Material Bucket

72 in. (1.8 m), 1.0 cu yd (0.76 m<sup>3</sup>)  
96 in. (2.4 m), 1.5 cu yd (1.15 m<sup>3</sup>)  
102 in. (2.6 m), 2.0 cu yd (1.53 m<sup>3</sup>)

#### Grapple Bucket

96 in. (2.4 m), 1.75 cu yd (1.34 m<sup>3</sup>)

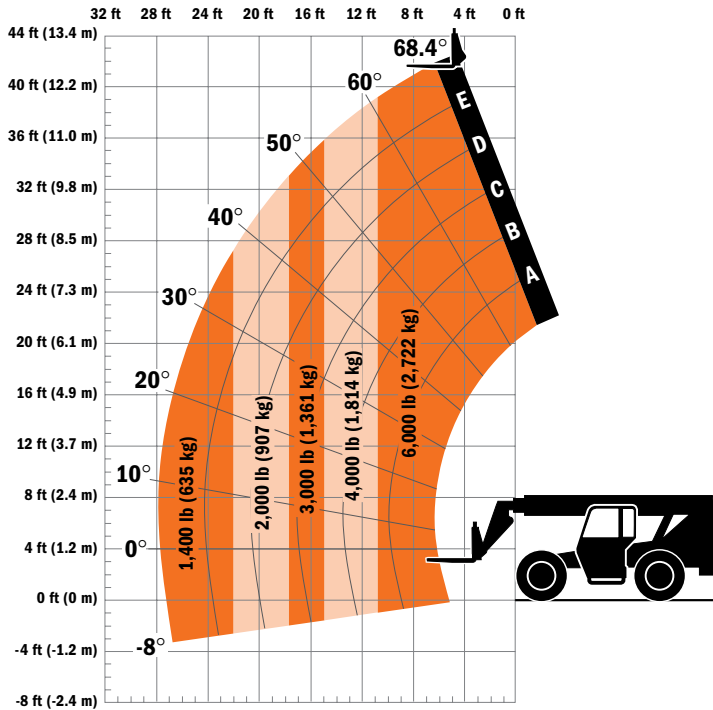
#### Truss Boom

12 ft (3.7 m), 2,000 lb (907 kg) capacity  
15 ft (4.6 m), 2,000 lb (907 kg) capacity  
12 ft (3.7 m) with winch,  
2,000 lb (907 kg) capacity

#### Fork Mounted Work Platform

8 ft (2.4 m), 1,000 lb (455 kg) capacity

#### Lifting Hook



### Dimensions

Length (less forks)	232 in. (5.89 m)
Width	98 in. (2.48 m)
Height	102 in. (2.59 m)
Wheelbase	113 in. (2.87 m)
Ground Clearance	16 in. (406 mm)
Outside Turning Radius	168 in. (4.26 m)
Max. Reach from Front Tires to 24 in. (609 mm) Load Center	27 ft 11 in (8.51 m)

### IMPORTANT

Rated lift capacities shown are with machine equipped with carriage and pallet forks. The machine must be level on a firm surface with undamaged, properly inflated tires. Machine specifications and stability are based on rated lift capacities at specific boom angles and boom lengths. (If specifications are critical, the proposed application should be discussed with your dealer.)

DO NOT exceed rated lift capacity loads, as unstable and dangerous machine conditions will result.

DO NOT tip the machine forward to determine the allowable load.

Use only JLG approved attachments with proper material handler model/attachment load capacity charts displayed in the operator's cab. OSHA requires all rough terrain forklift operators be trained according to OSHA 29 CFR 1910.178 (1).



### JLG Industries, Inc.

1 JLG Drive  
 McCConnellsburg, PA 17233-9533  
 Telephone 717-485-5161  
 Toll-free in US 877-JLG-LIFT  
 Fax 717-485-6417  
[www.jlg.com](http://www.jlg.com)

An Oshkosh Corporation Company

Due to continuous product improvements, JLG Industries reserves the right to make specification and/or equipment changes without prior notification. This machine meets or exceeds ANSI/ITSDF B56.6-2005 as originally manufactured for intended applications.

Form No.: SS-ST6042-0605-15M  
 Part No.: 3132402  
 R010903  
 Printed in USA