

## Model **6036** TELEHANDLER



### Performance

**Rated Capacity**  
6,000 lb (2,722 kg)

**Maximum Lift Height**  
36 ft 1 in. (11.0 m)

**Frame Leveling**  
10 degrees

**Lift Speed (boom retracted)**  
Up: 10.8 sec  
Down: 7.6 sec

**Boom Speed**  
Extend: 11.2 sec  
Retract: 12.8 sec

**Travel Speed Forward**  
4-Speed Forward: 20 mph (32 kmph)

**Drawbar Pull**  
23,580 lb (10,965 kg)

**Operating Weight** Without Carriage and Forks  
20,095 lb (9,115 kg)

### Standard Specifications

**Engine**  
Make and Model Cummins 4BT3.9 Turbo  
Fuel Diesel  
Cycles 4  
No. of Cylinders 4  
Displacement 239 cu in. (3.9 L)  
Torque Rating 305 lb ft (414 Nm)  
@ 1,500 rpm  
2,500 rpm

Rated Speed 2,500 rpm  
Max. Gross BHP 99 hp (74 kW)  
Fuel Tank 35 gal (132 L)

**Engine Filters**  
Two-stage dry air cleaner – centrifugal pre-cleaner with continuous dust ejector and replaceable dry filter element.  
Replaceable spin-on fuel filter.  
Full-flow replaceable spin-on engine oil filter.

**Electrical System**  
Voltage: 12V  
Alternator: 95 amp  
Battery: 1,000 cold cranking amps at 0°F

**Transmission**  
Modulated powershift.  
4-speed forward and 3-speed reverse.

**Axles**  
Full-time planetary 4-wheel drive.  
Oscillating rear axle with Stabil-Trak system.

**Service Brakes**  
Hydraulically actuated inboard wet disc brakes.

**Parking Brakes**  
Emergency brake with transmission declutch feature.

**Tires**  
Standard: Air-filled 13.00 x 24 – 12 ply

**Cab**  
Certified ROPS/FOPS structure.  
Deluxe suspension seat with retractable seat belt.  
Rear view mirrors.

**Steering 4-Wheel**  
Power steering.  
Operator selectable 4-wheel circle, 4-wheel crab, 2-wheel front.

**Instruments**  
Instrument cluster with gauges and warning lights.

**Controls**  
Dual joystick controls.  
Proportional frame tilt, fork tilt and auxiliary hydraulics.

**TRAK-Attach System**  
**Hydraulic System-Implement**  
Piston pump.  
60 gal (225 L) system capacity.  
Variable flow, load sensitive hydraulic system.  
Load holding valves on frame level, stabilizer, attachment tilt, extend and lift cylinders.

**Auxiliary Hydraulics**  
Used for all attachments equipped with cylinders or other hydraulic components.  
Consists of valves, controls and hydraulic lines.

### Accessories & Options

**Enclosed All Weather Cab**  
**Basic Work Lights**  
**Complete Road Lights**  
**Rotating Beacon**  
**Fenders**  
**Tires:**  
Foam-filled  
Rock Tires  
Size—15.5 x 25-12PR

### Attachments

**Standard Carriage**  
48 in. (1.2 m), 60 in. (1.5 m) or 72 in. (1.8 m)

**± 10° Side Tilt Carriage**  
48 in. (1.2 m), 60 in. (1.5 m) or 72 in. (1.8 m)

**± 45° Swing Carriage**  
72 in. (1.8 m)

**Pallet Forks**  
2.36 x 4 x 48 in. (60 mm x 102 mm x 1.2 m)

**Lumber Forks**  
1.75 x 7 x 60 in. (45 mm x 178 mm x 1.5 m)

**Block Forks**  
2 x 2 x 48 in. (51 mm x 51 mm x 1.2 m)

**Wallboard/Sheet Material Handler**  
**Utility Bucket**  
1.25 cu yd (0.95 m<sup>3</sup>)  
96 in. (2.4 m)

**Truss Boom**  
12 ft (3.7 m)

**Truss Boom With Winch**  
3 ft (91 cm)

**Crane Hook**

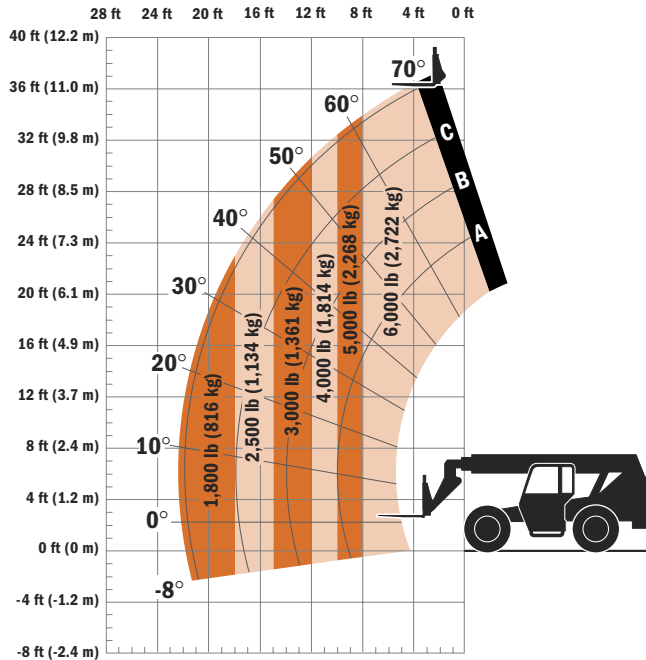
Distributed By:



[www.onesourcerental.com](http://www.onesourcerental.com)

# Model 6036

## TELEHANDLER



### Dimensions

- Length (less forks) . . . . . 217 in. (5.51 m)
- Width . . . . . 98 in. (2.48 m)
- Height . . . . . 100 in. (2.54 m)
- Wheelbase . . . . . 113 in. (2.87 m)
- Ground Clearance . . . . . 16 in. (406 mm)
- Outside Turning Radius . . . 156 in. (3.96 m)
- Max. Reach from Front Tires to  
24 in. (609 mm) Load Center . . . 22.3 ft  
(6.8 m)

### IMPORTANT

Rated lift capacities shown are with machine equipped with carriage and pallet forks. The machine must be level on a firm surface with undamaged, properly inflated tires. Machine specifications and stability are based on rated lift capacities at specific boom angles and boom lengths. (If specifications are critical, the proposed application should be discussed with your dealer.)

DO NOT exceed rated lift capacity loads, as unstable and dangerous machine conditions will result.

DO NOT tip the machine forward to determine the allowable load.

Use only JLG approved attachments with proper material handler model/attachment load capacity charts displayed in the operator's cab. OSHA requires all rough terrain forklift operators be trained according to OSHA 29 CFR 1910.178 (1).



### JLG Industries, Inc.

1 JLG Drive  
 McCConnellsburg, PA 17233-9533  
 Telephone 717-485-5161  
 Toll-free in US 877-JLG-LIFT  
 Fax 717-485-6417  
[www.jlg.com](http://www.jlg.com)

*Due to continuous product improvements, JLG Industries reserves the right to make specification and/or equipment changes without prior notification. This machine meets or exceeds ASME B56.6-2002 as originally manufactured for intended applications.*

Form No.: SS-ST6036-0204-15M  
 Part No.: 3132403  
 Printed in USA  
 R120602